

MIGRATION DU BIODÔME

« En rendant les visites plus immersives, introspectives et émotives, en offrant d'autres perspectives sur les écosystèmes, le projet de Migration du Biodôme misera sur des expériences qui éveillent tous les sens. »

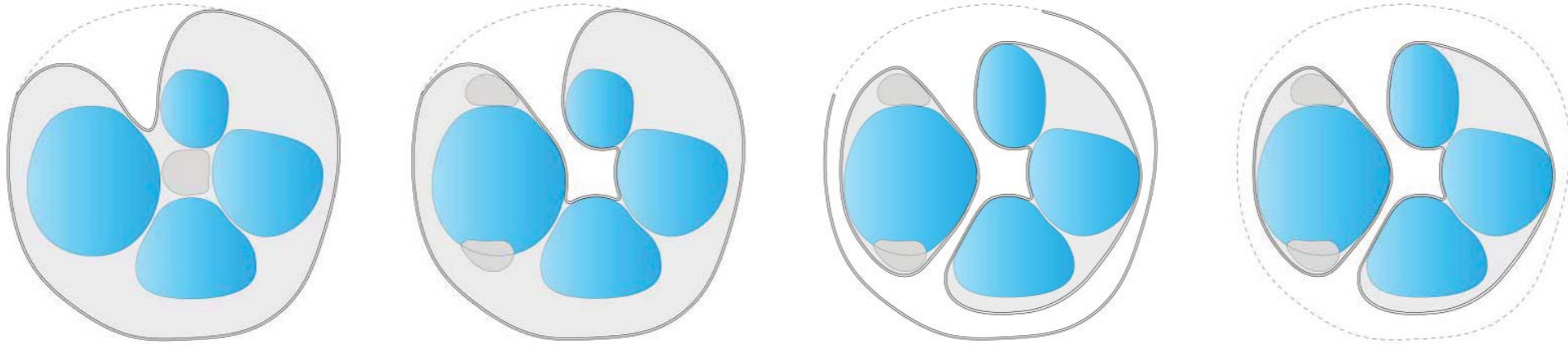
ESPACE POUR LA VIE- Montréal
Extrait du règlement du concours Concours d'architecture
29 janvier 2014



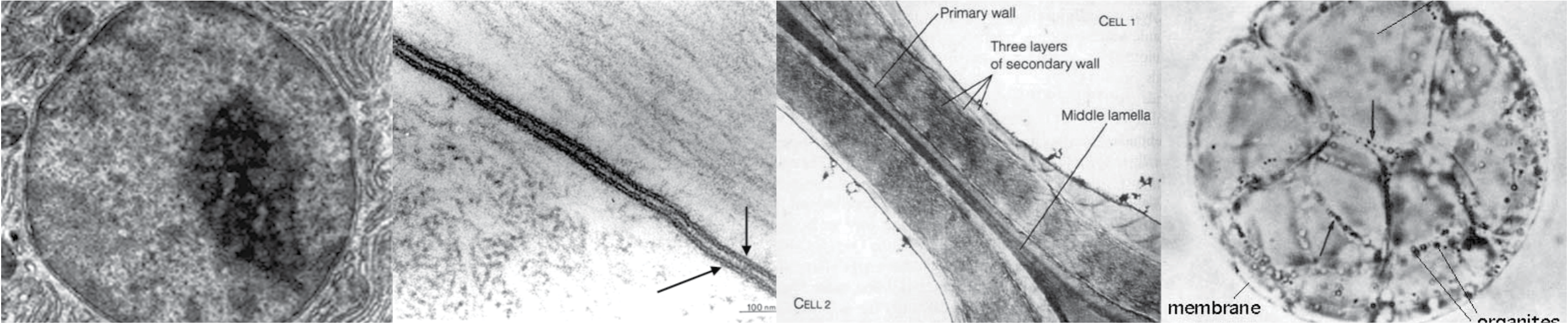
espace
pour la
vie montréal

biodôme
insectarium
jardin botanique
planétarium
rio tinto alcan

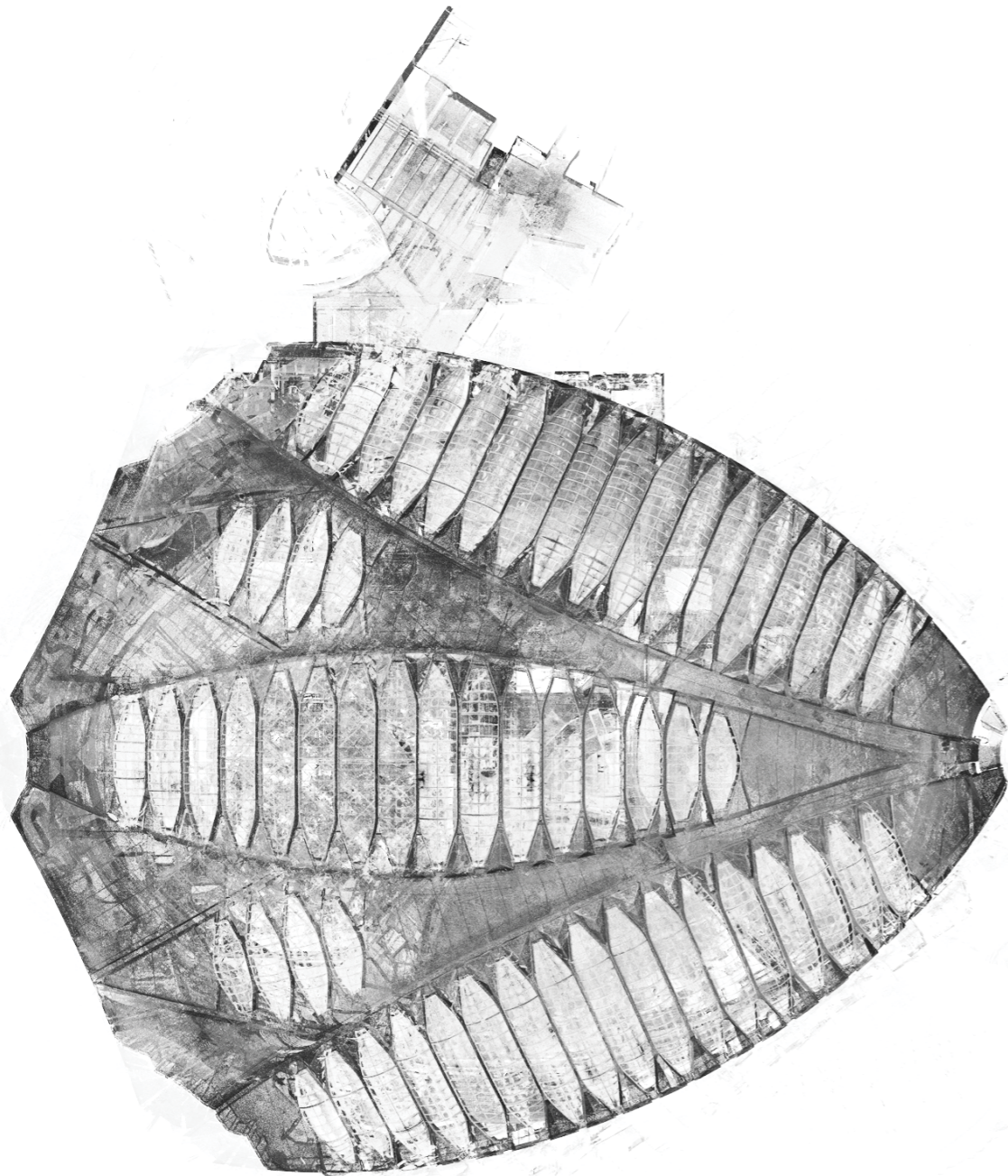
Montréal 



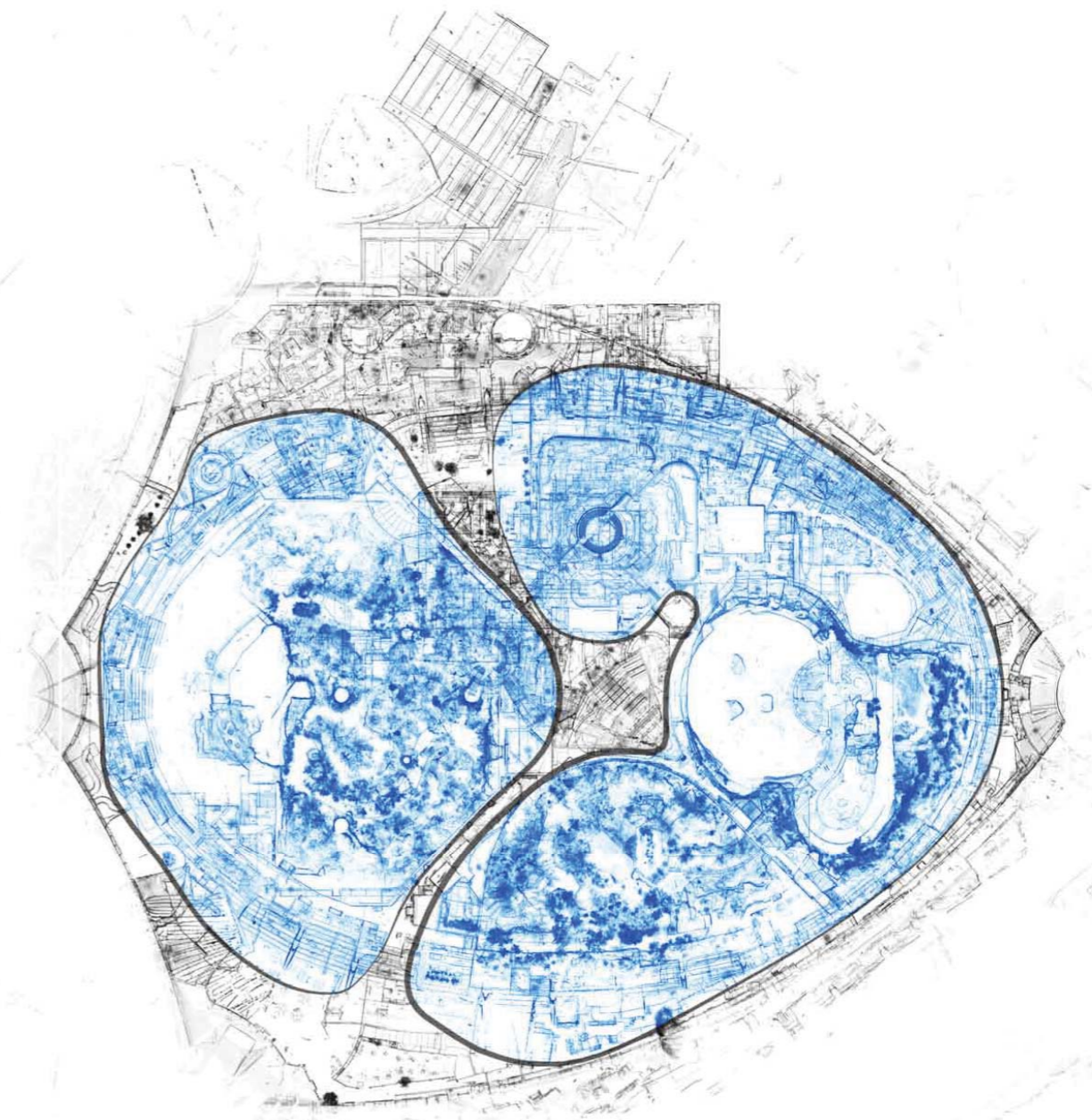
STRATÉGIE CONCEPTUELLE



TRANSFORMATION INTRACELLULAIRE



ORGANISME VIVANT



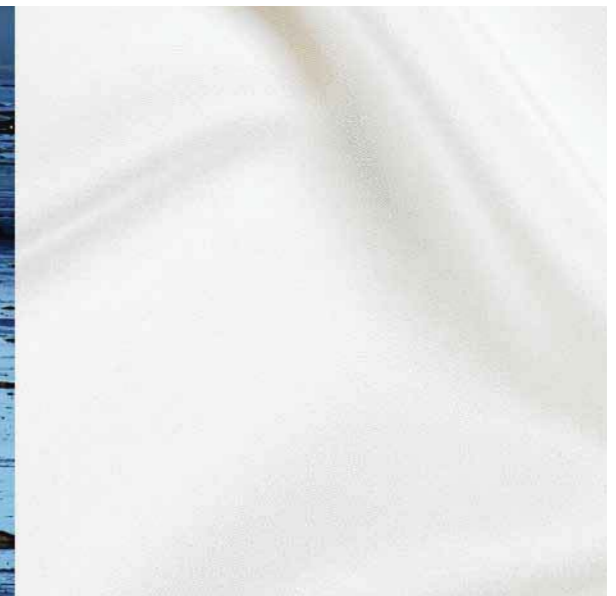
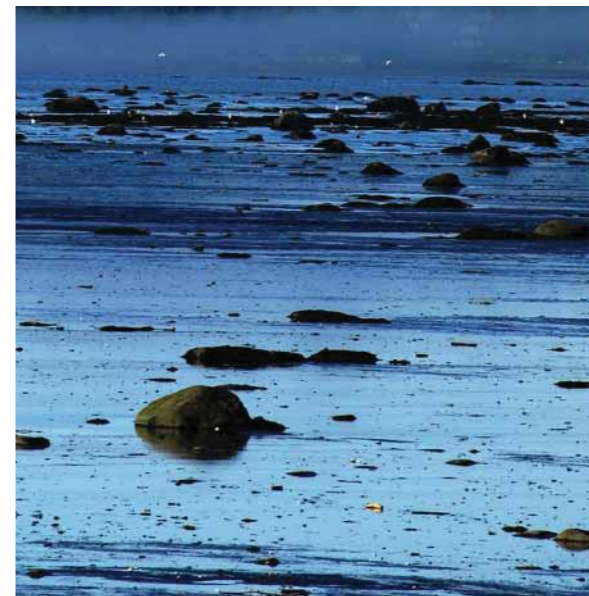
ORGANISME VIVANT: INSERTION



COUPE TRANSVERSALE: INSERTION



TRIPTYQUE: PATRIMOINE-PAROI-PATRIMOINE

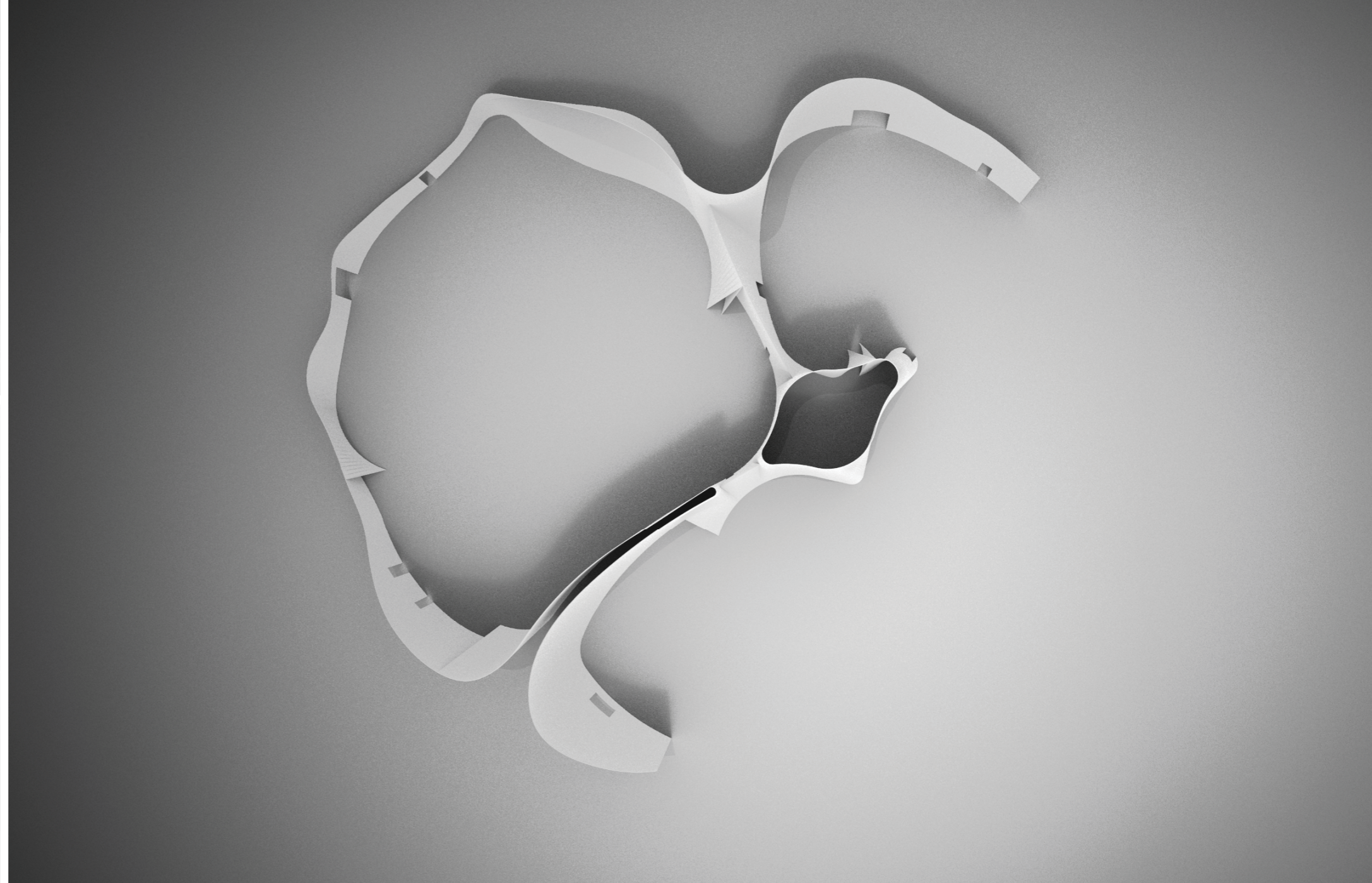


DIPTYQUE: DUALITÉ PAROI-SPÉCIMENT VIVANT

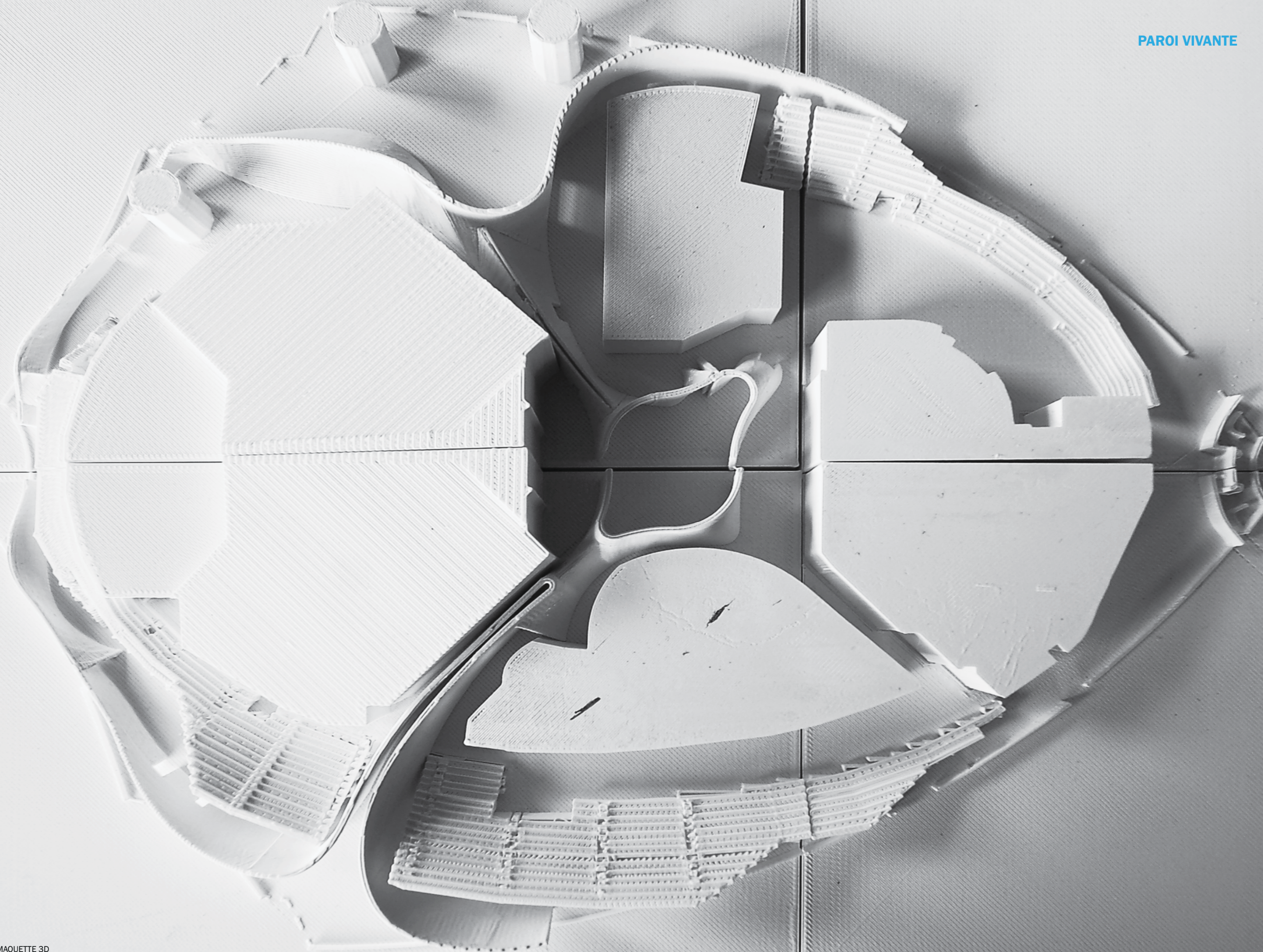
RICHARD SERRA: INSIDE OUT, 2013

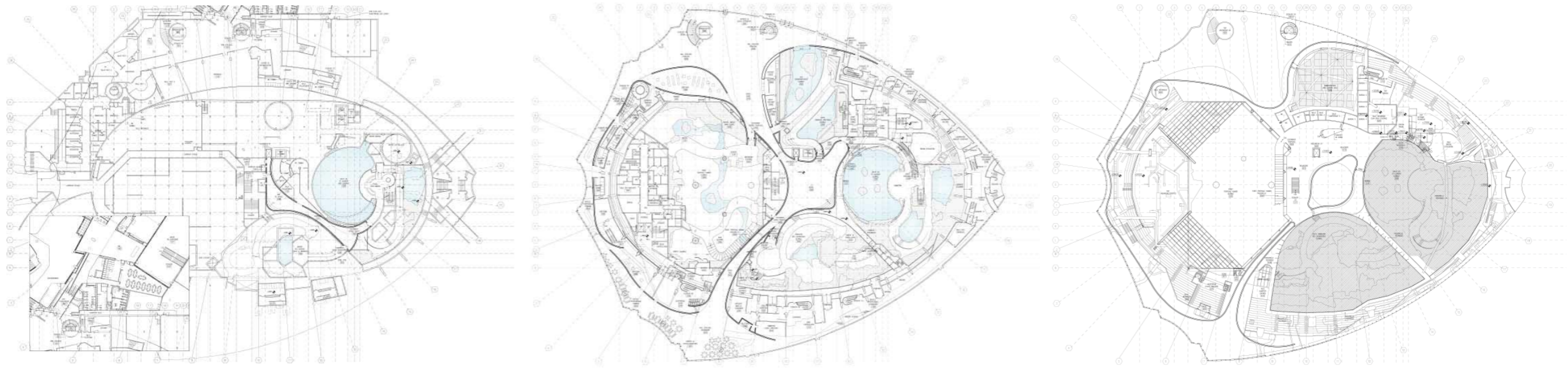


DOSIS DE ARQUITECTURA: CASA V, 2013

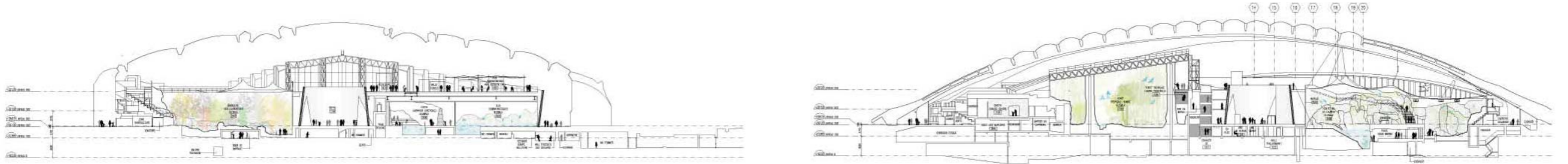


PAROI BIOPHILIQUE





PLANS



COUPES



MAQUETTE 3D: ÉLÉVATION NORD



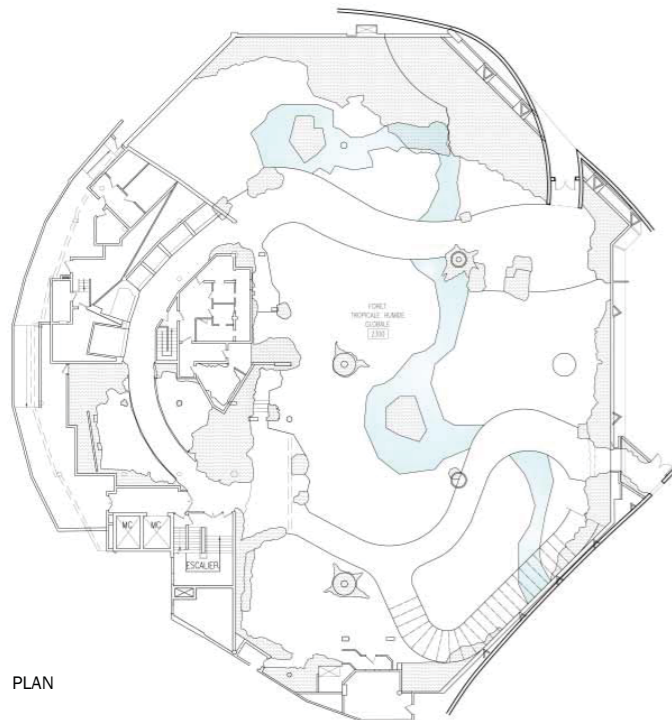
MAQUETTE 3D: ÉLÉVATION OUEST



MAQUETTE 3D: ÉLÉVATION SUD



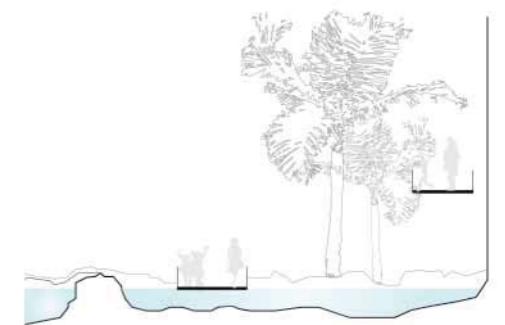
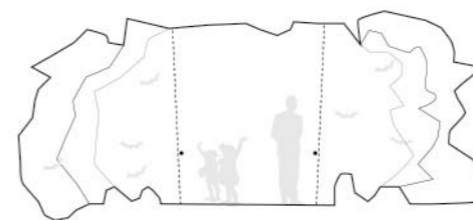
FORÊT TROPICALE HUMIDE



PLAN

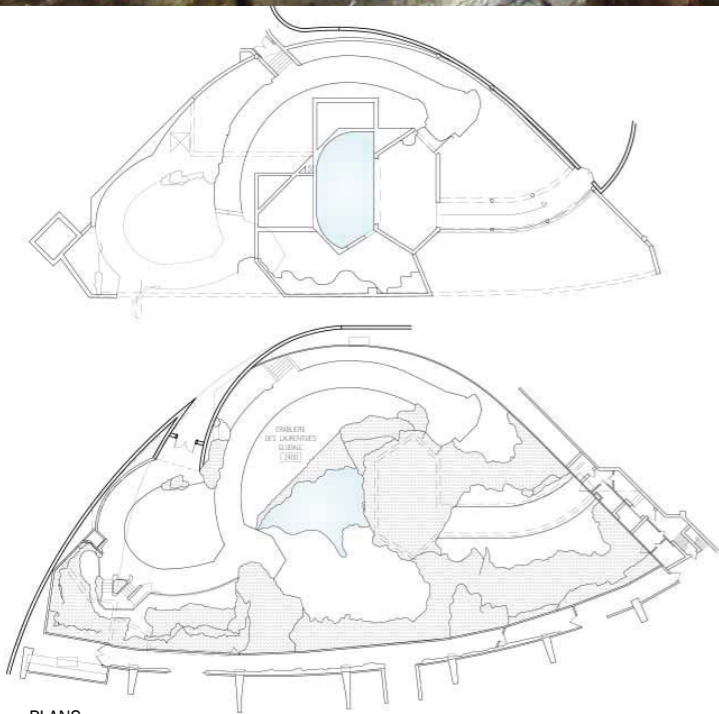


COUPES

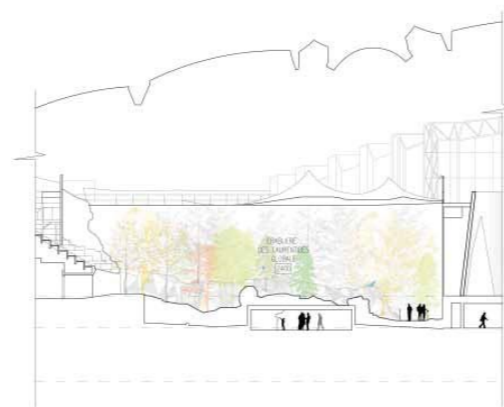




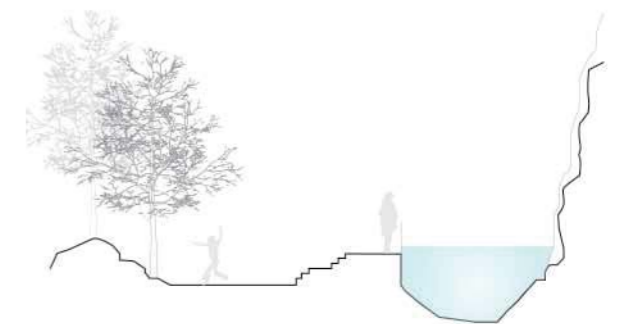
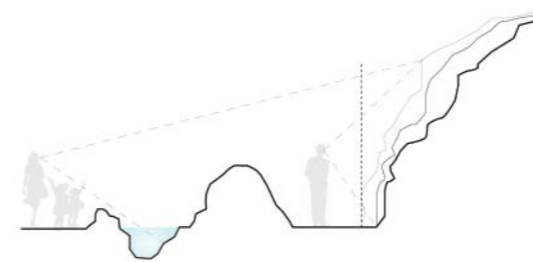
ÉRABLIÈRE DES LAURENTIDES



PLANS

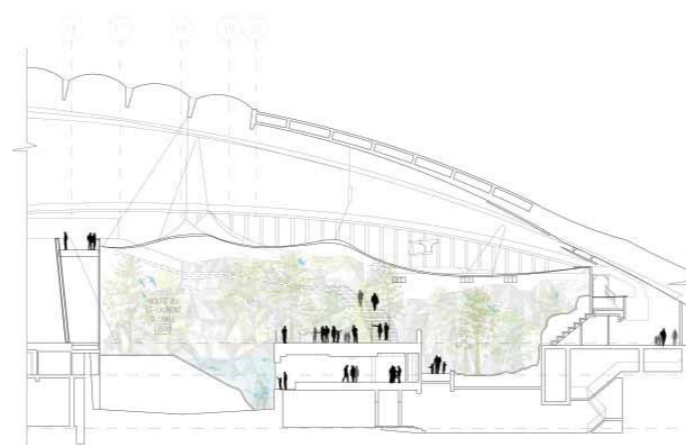
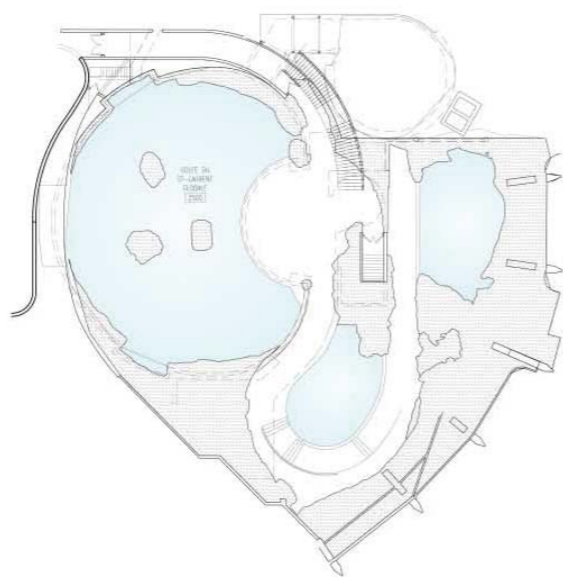
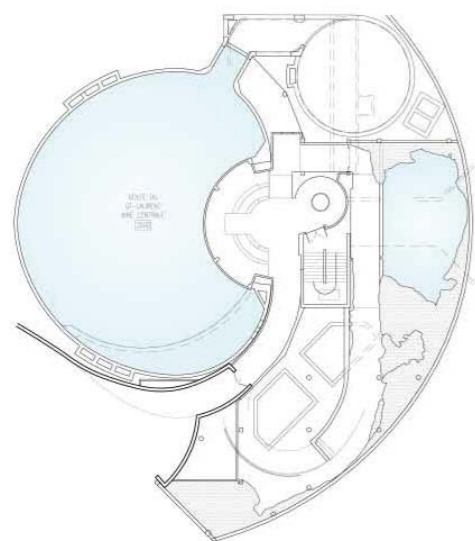


COUPES

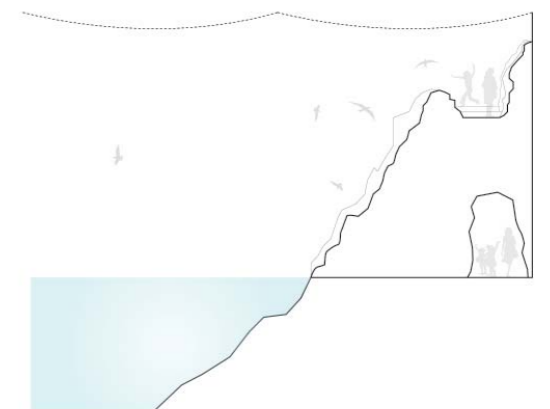




GOLFE DU SAINT-LAURENT



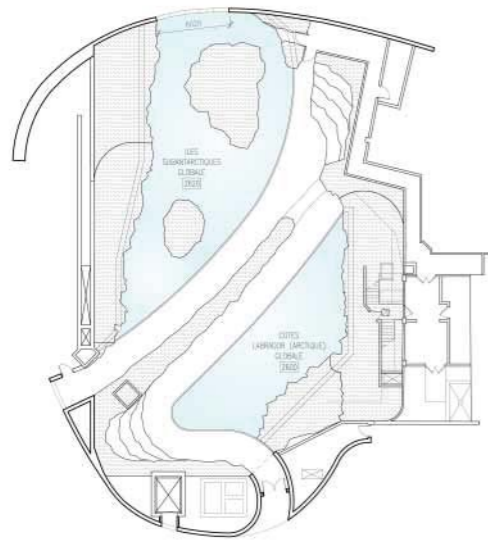
COUPES



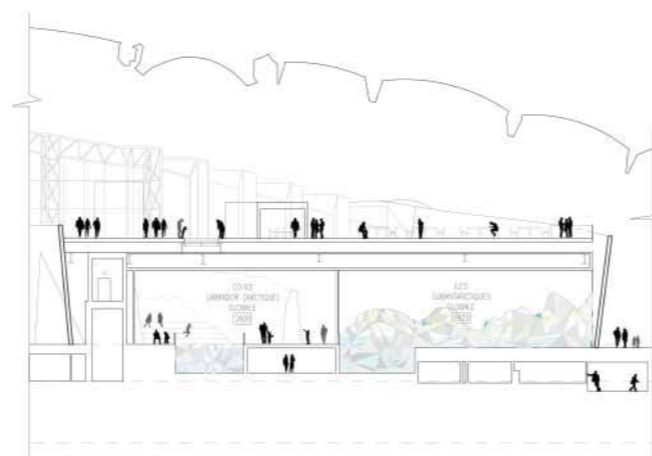
PLANS



RÉGIONS SUBPOLAIRES



PLAN

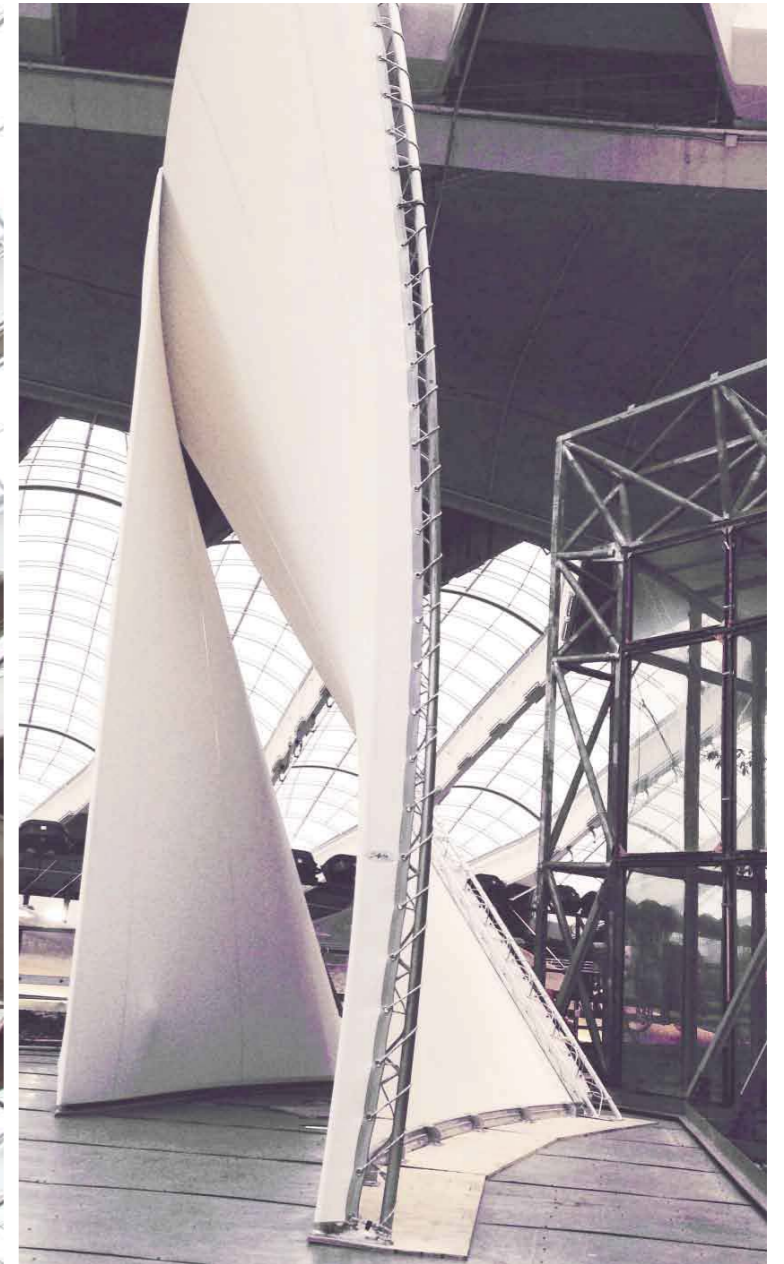


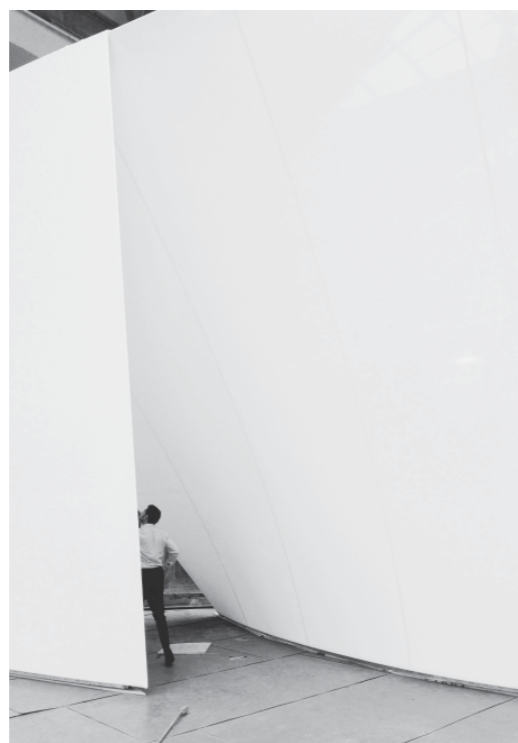
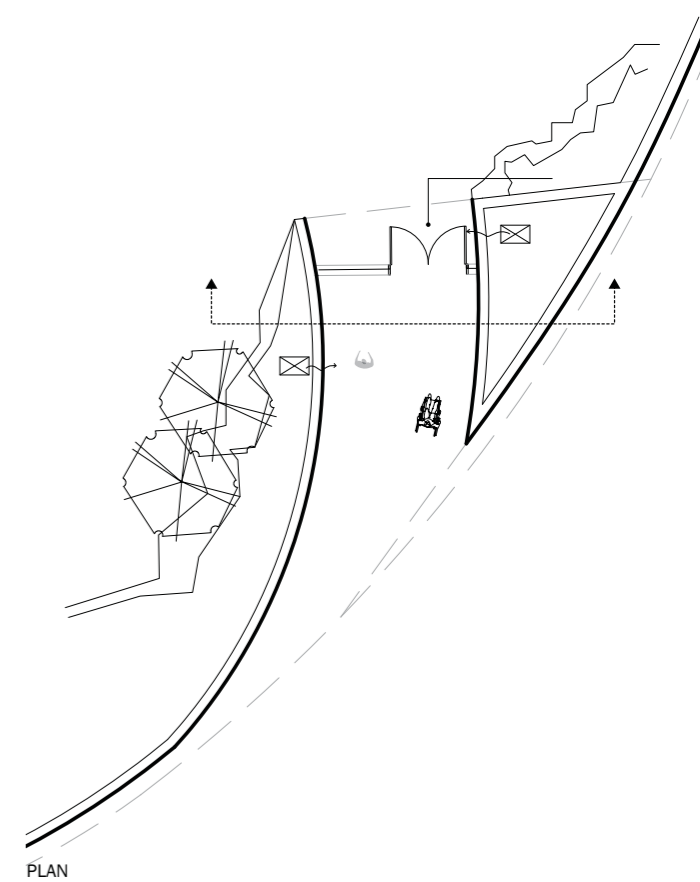
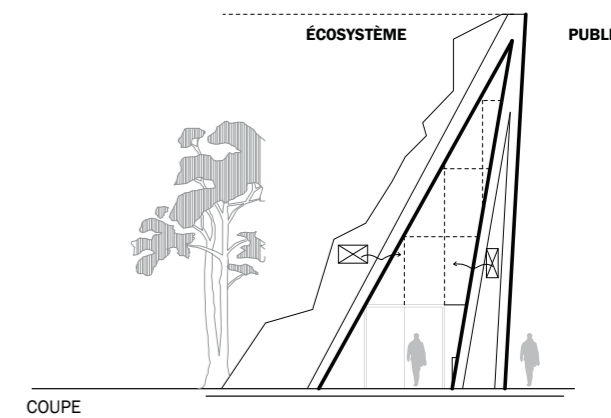
COUPE

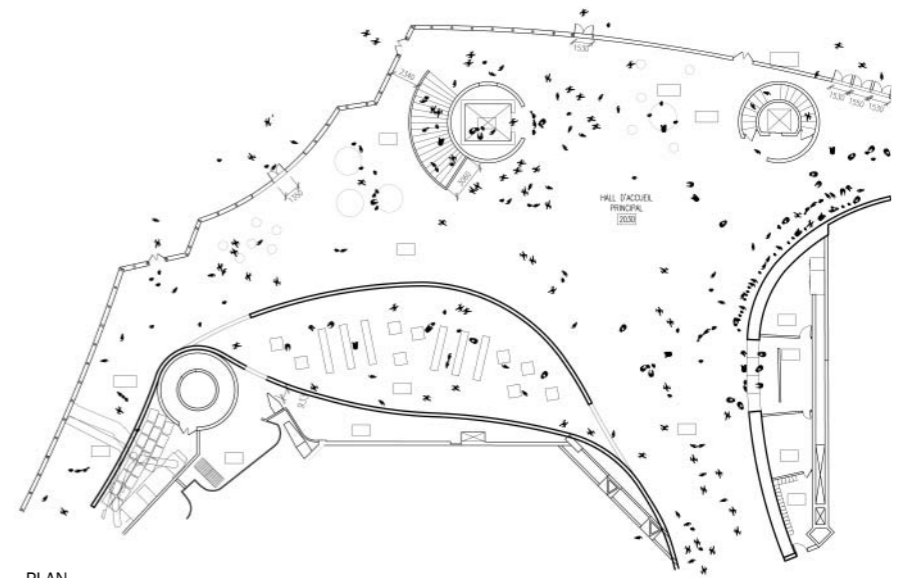




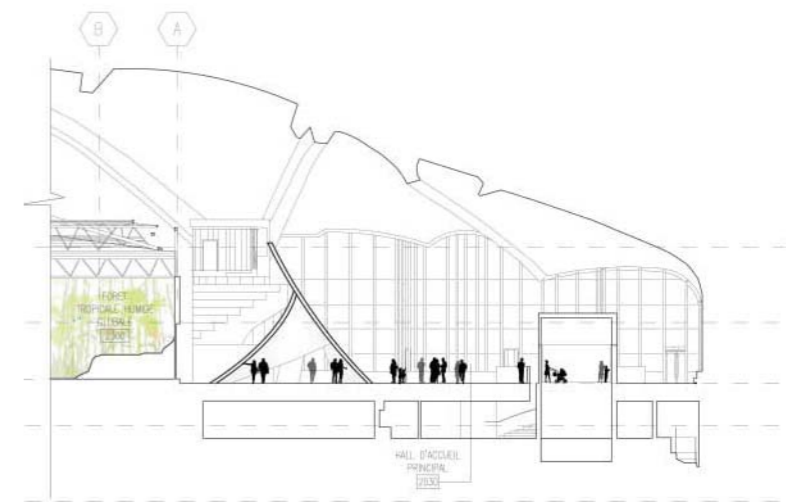
ÉCHANTILLON GRANDE ÉCHELLE







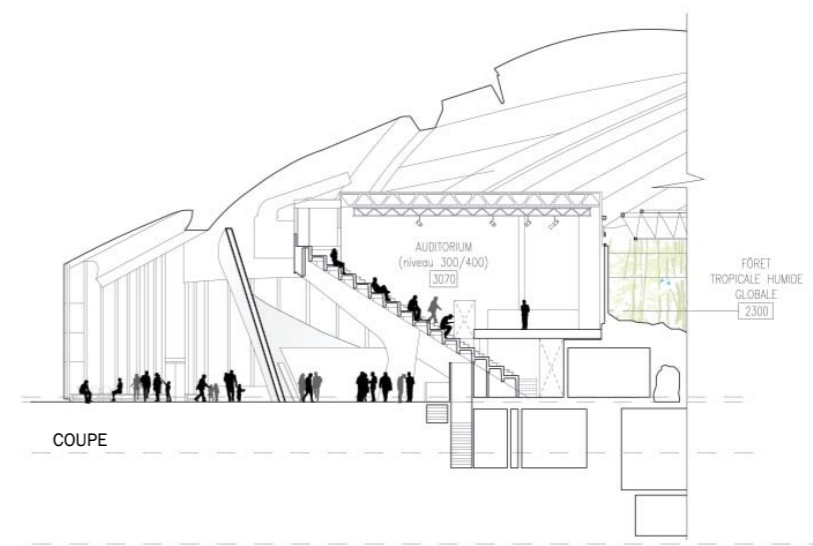
PLAN



COUPE



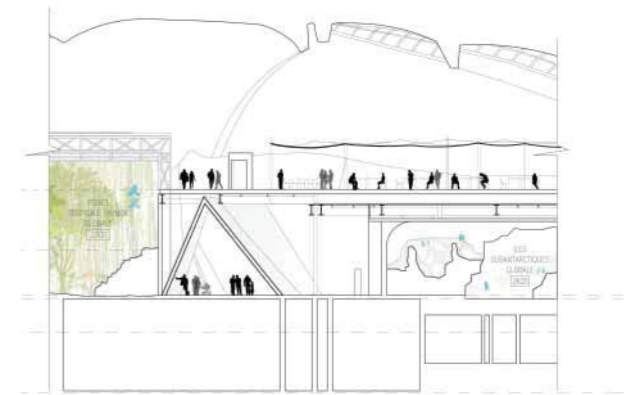
COUPE



COUPE



PLAN



COUPE